

# Morven Offshore Wind Farm

## Notice to Mariners

<b>NtM Number</b>	Morven Windfarms/001 v01 Geophysical Survey <b>(outlining offshore surveys of the array area)</b>
<b>Date of Issue</b>	<b>05.04.22</b>
<b>1 Planned Activity</b>	
<p>A geophysical survey of the proposed Morven Offshore Wind Farm Project will commence on the 11.04.22 for approximately 3 months. The survey involves the use of 2DUHR equipment, Multibeam Echosounder (MBES), Sidescan Sonar (SSS) and Magnetometer equipment, some of which will be towed approximately 150 m astern of the vessel. Drop-down camera and grab samples will be collected at approximately 86 locations during the survey, the timing of which is not yet confirmed; Cone Penetration Tests (CPTs) will be undertaken at approximately 150 locations during August; approximately 15 boreholes will be undertaken during September/October.</p> <p>The extent of the planned survey is shown in Figure 1.</p> <p>Coordinates of the offshore array are also provided below.</p> <p>An Offshore Fisheries Liaison Officer (OFLO) will be present aboard the survey vessel – see details below.</p> <p>Any at sea, operational issues should be directed towards the OFLO in the first instance.</p> <p>More general queries about the survey and/or proposed Project can be directed towards the Company Fisheries Liaison Officer (CFLO) – see details below.</p>	
<b>2 Geographic co-ordinates and chart of survey area</b>	
<i>All positions quoted in WGS84: latitude /longitude (in degrees decimal minutes)</i>	
See attached figure and list of coordinates. In the figure the burgundy line indicates the survey area.	
<b>3 Safe clearances, navigation safety features and safety notes for mariners</b>	
All vessels are requested to maintain a safe distance (500 m) from the survey vessel <i>Ocean Geograph</i> at all times. Vessels will display appropriate shapes and lights when surveying.	
<b>4 Outline programme of works</b>	
Start Date: 11 April 2022	Estimated Completion Date: 15 July 2022

**5 Vessel details**

<b>Vessel Name:</b>	<b>Ocean Geograph</b>
<b>Vessel Type / LOA(m):</b>	Multi-Role Survey Vessel / 70 m
<b>Vessel Function:</b>	Survey vessel
<b>VHF Call Sign:</b>	3FXF3
<b>MMSI:</b>	372145000
<b>Vessel Operator Telephone:</b>	+44 1493 845600 +44 2036 951 403 (Vessel Bridge)



**6 Project Contact Details**

	<p><b>Offshore Fisheries Liaison Officer:</b> Stanley Morgan</p> <p><b>Email:</b> FLO@geograph.gardline.co.uk</p> <p><b>Telephone:</b> +44 (0) 2036 951 403</p>	<p><b>Company Fisheries Liaison Officers:</b> MarineSpace</p> <p><b>Email:</b> Morven-CFLO@marinespace.co.uk</p> <p><b>Telephone:</b> +44 (0) 2380 381 945</p>
--	---	--

Figure 1: Morven survey areas (purple line)

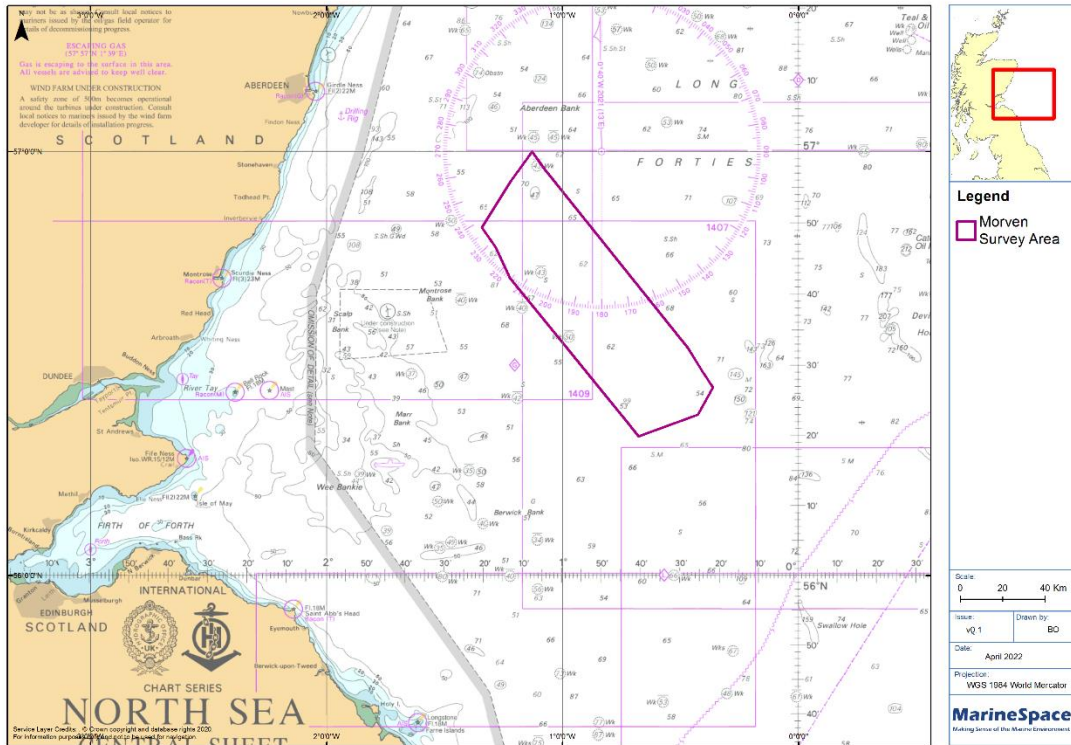


Table 1: Morven survey area

Point	Latitude (WGS 84)	Longitude (WGS 84)
1	56°19.8542 'N	000°40.7271 'W
2	56°21.9250 'N	000°43.6284 'W
3	56°22.4237 'N	000°44.3521 'W
4	56°42.2936 'N	001°13.3747 'W
5	56°46.6587 'N	001°17.0965 'W
6	56°49.3810 'N	001°20.5609 'W
7	56°55.8604 'N	001°13.2649 'W
8	56°59.9929 'N	001°7.8065 'W
9	56°57.6000 'N	001°4.6217 'W
10	56°32.4315 'N	000°28.2133 'W
11	56°29.1201 'N	000°24.5352 'W
12	56°26.8175 'N	000°21.8204 'W
13	56°22.9322 'N	000°25.5861 'W
14	56°19.8542 'N	000°40.7271 'W