

Morgan and Mona Offshore Wind Farm

Notice to Mariners

NtM Number	Morgan and Mona Offshore Windfarms/016 (outlining nearshore geotechnical surveys)
Date of Issue	24.08.22
1 Planned Activity	
<p>The nearshore geotechnical survey of the proposed Morgan (North) and Mona (South) Offshore Wind Farm Project cable corridors is due to commence on 30 August 2022, with a duration of 7 days excluding poor weather. The survey will involve lowering equipment to the seabed to acquire geotechnical samples. The survey area covers areas inshore of the 15m water depth to approximately 2m. The extent of the planned survey area is shown in the attached figure and coordinates of the survey area are also provided below.</p> <p>Contact details for the Fishing Industry Representative are provided below.</p>	
2 Permissions in place	
Licencing Authority	Licence Number
NRW	RML2201 (Marine Licence)
NRW	E0196 (Exemption)
3 Geographic co-ordinates and chart of survey area <i>All positions quoted in WGS84: latitude /longitude (in degrees decimal minutes)</i>	
See attached figure and list of coordinates.	
4 Safe clearances, navigation safety features and safety notes for mariners	
All vessels are requested to maintain a safe distance (0.5 nm) from the survey vessel <i>Forth Joustier</i> at all times. Vessels will display appropriate shapes and lights when surveying.	
5 Outline programme of works	
Start Date: 30 August 2022	Estimated Duration: ~7 days

6 Vessel details

Vessel Name:	Forth Joster
Vessel Type / LOA(m):	Specialised coastal Survey Vessel / 14.1 m
Vessel Function:	Tug Workboat
VHF Call Sign:	2BME4
MMSI:	235067372
Vessel Operator Contact details:	+44 7969 515 016 mvjoster@briggsmarine.com



7 Project Contact Details

Tom Watson (NFFO) Email: tomwatsonfleetwood@btinternet.com Telephone: +44 790 317 3624	Company Fisheries Liaison Officers: Beth Owens (MarineSpace) Email: Yellow1-2CFLO@marinespace.co.uk Telephone: +44 783 355 7808 Jonny Lewis (MarineSpace) Email: Yellow1-2CFLO@marinespace.co.uk Telephone: +44 781 764 4284
--------------------------------------------------------------------------------------------------------------------------------------------------------------------------	-----------------------------------------------------------------------------------------------------------------------------------------------------------------------------------------------------------------------------------------------------------------------------------------------------------------------------------------------------------------------------------------------------------

Figure 1: Morgan and Mona nearshore survey areas* (green and brown lines).

* within this area, only a 1.5km width corridor will be surveyed.

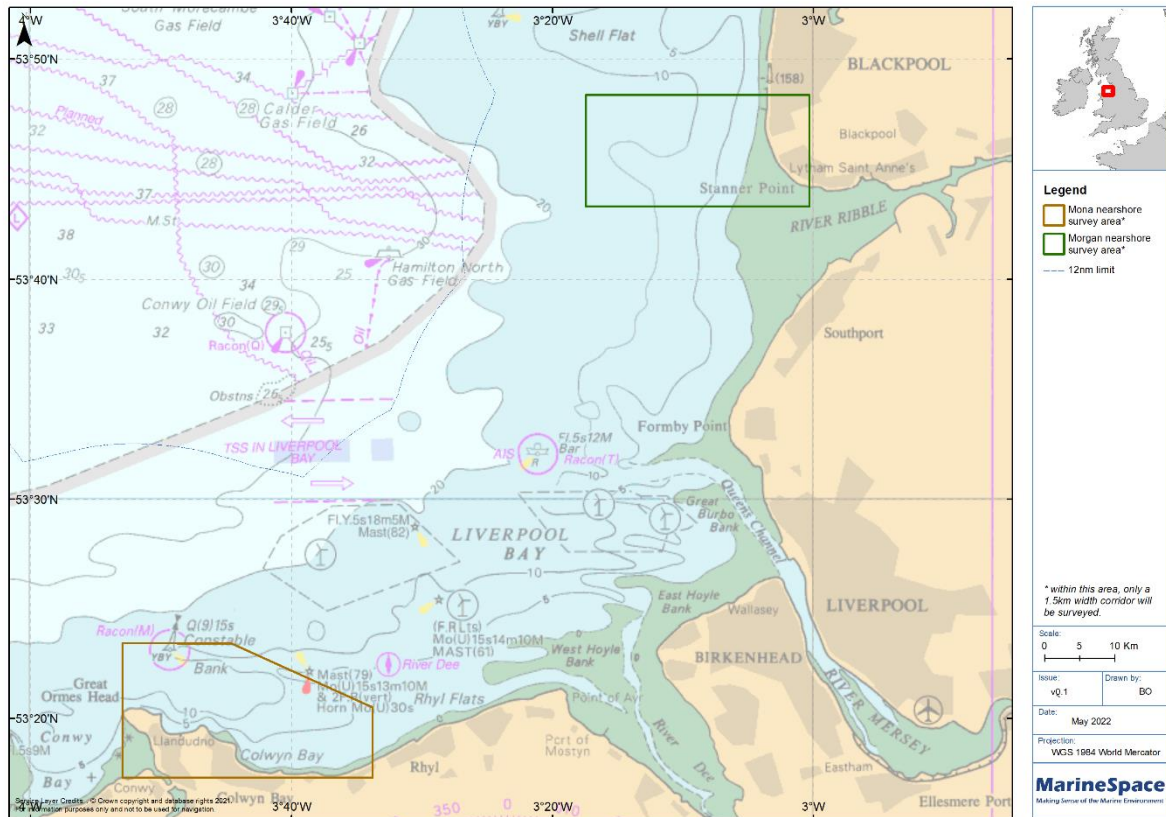


Table 1: Mona nearshore survey area

Point	Latitude (WGS 84)	Longitude (WGS 84)
1	53°17.2664'N	003°52.9491'W
2	53°23.4374'N	003°52.9491'W
3	53°23.4041'N	003°44.5801'W
4	53°20.4935'N	003°33.7826'W
5	53°17.2664'N	003°33.7826'W
6	53°17.2664'N	003°52.9491'W

Table 2: Morgan nearshore survey area

Point	Latitude (WGS84)	Longitude (WGS84)
1	53°43.3169'N	003°17.4538'W
2	53°48.3696'N	003°17.4653'W
3	53°48.3696'N	003°0.3228'W

Point	Latitude (WGS84)	Longitude (WGS84)
4	53°43.3169'N	003°0.3113'W
5	53°43.3169'N	003°17.4538'W