

Morgan and Mona Offshore Wind Farms

Notice to Mariners

NtM Number	Morgan and Mona Offshore Windfarms /015_v8 (updated - service visit)
Date of Issue	24.08.22

1 Planned Activity

Metocean instrumentation and floating LiDAR instrumentation have been deployed within the boundary of the proposed Morgan (North) and Mona (South) Offshore Wind Farm Project sites in the Irish Sea.

The metocean instrumentation within the Mona and Morgan Project site were deployed successfully in November 2021. It should be noted that instrumentation is deployed on the seabed some distance from the surface buoy, so marine users are requested to maintain the safe clearance distances as outlined in Section 3 below. Further details on the mooring design are available in Section 7. Metocean instrumentation at the Mona (South) location has now been successfully redeployed and will remain on location until planned recovery approximately November 2022. **As-laid coordinates have been updated in Section 2 for the metocean equipment, following unplanned works which were undertaken during mid-June.**

The floating LiDAR instrumentation were successfully deployed at the Mona Project site and the Morgan project site in March 2022. It should be noted that instrumentation is deployed on the seabed some distance from the surface buoy, so marine users are requested to maintain the safe clearance distances as outlined in Section 3 below. Further details on the mooring design are available in Section 7.

A service visit will be undertaken by the Vital from the 26 August. Completion of the service visit is expected to take approximately 4 days.

All equipment will be maintained in position via appropriate mooring systems and will gather metocean data to inform the proposed Project. Details of the devices and relevant Aids to navigation are provided below.

Floating LiDAR instrumentation		Metocean instrumentation	
Morgan Name: Fugro Buoy WS188 MMSI: 992351368	Mona Name: Fugro Buoy WS187 MMSI: 992351369	Morgan Name: Morgan 01 MMSI: 992351367	Mona Name: Mona 01 MMSI: 992351366
Yellow 'X' shaped topmark Yellow in colour Fl (5) Y 20s light (3.5nm range) Flash rate not exceeding 20 per minute			Yellow 'X' shaped topmark Yellow in colour Fl (5) Y 20s light (3.5nm range) Flash rate not exceeding 20 per minute

2 Geographic co-ordinates and chart of survey area

All positions quoted in WGS84: latitude /longitude (in degrees decimal minutes)

Area	Floating LiDAR anchor	Metocean instrumentation	Metocean marker buoy anchor
Morgan (North)	53° 59.5211' N 3° 59.4018' W	53° 59. 747' N 3° 59. 657' W	53° 59.764' N 3° 59.648' W
Mona (South)	53° 40.0799' N 3° 53.444' W	53° 40.236' N 3° 53.833' W	53° 40.223' N 3° 53.855' W

3 Safe clearances, navigation safety features and safety notes for mariners

All vessels are requested to maintain a safe distance (500m) from the maintenance vessel at all times.
All vessels are requested to maintain a safe distance (400m) from the deployed monitoring equipment at all times.

4 Outline programme of works

Deployment (both Mona and Morgan Project sites)

Floating LiDAR instrumentation	Metocean instrumentation
Estimated Deployment Date: <i>Complete</i>	Estimated Deployment Date Morgan: <i>Complete</i> Estimated Deployment Date Mona: <i>Complete</i>

Operation (both Mona and Morgan Project sites)

Floating LiDAR instrumentation	Metocean instrumentation
Start: March 2022 End: Q1 2024	Start: November 2021 End: October/ November 2022

Maintenance schedule (both Mona and Morgan Project sites)

Floating LiDAR instrumentation	Metocean instrumentation
September/October 2022 (scheduled service visit)	August 2022 (scheduled service visit)

5 Vessel details

Vessel Name:	Forth Joustier
Vessel Type / LOA(m):	Multi-role survey vessel / 26.0 m
VHF Call Sign:	2BME4
MMSI:	235067372
Vessel Operator Telephone:	01592 872939



6 Project Contact Details

Fishing Industry Representative:

Tom Watson (NFFO)

Email: tomwatsonfleetwood@btinternet.com

Telephone: +44 790 317 3624

Company Fisheries Liaison Officers:

Beth Owens (MarineSpace)

Email:

Yellow1-2CFLO@marinespace.co.uk

Telephone: +44 783 355 7808

Jonny Lewis (MarineSpace)

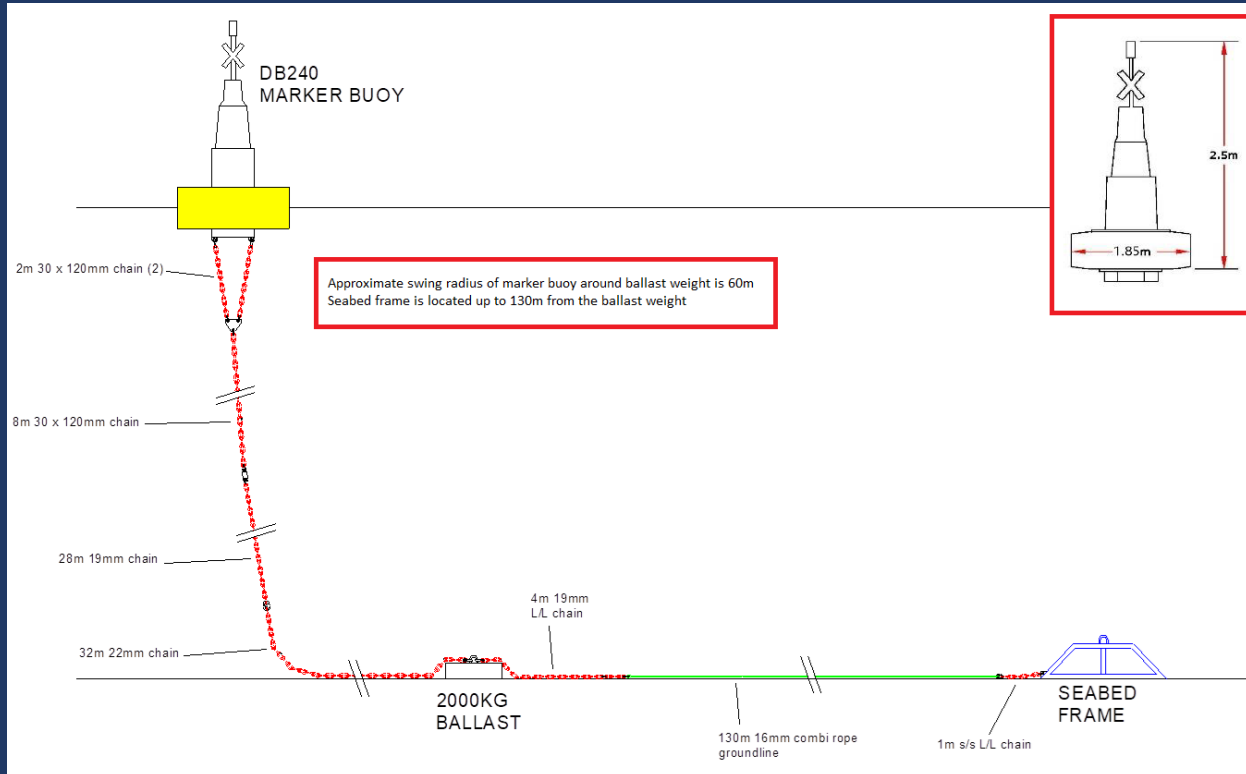
Email:

Yellow1-2CFLO@marinespace.co.uk

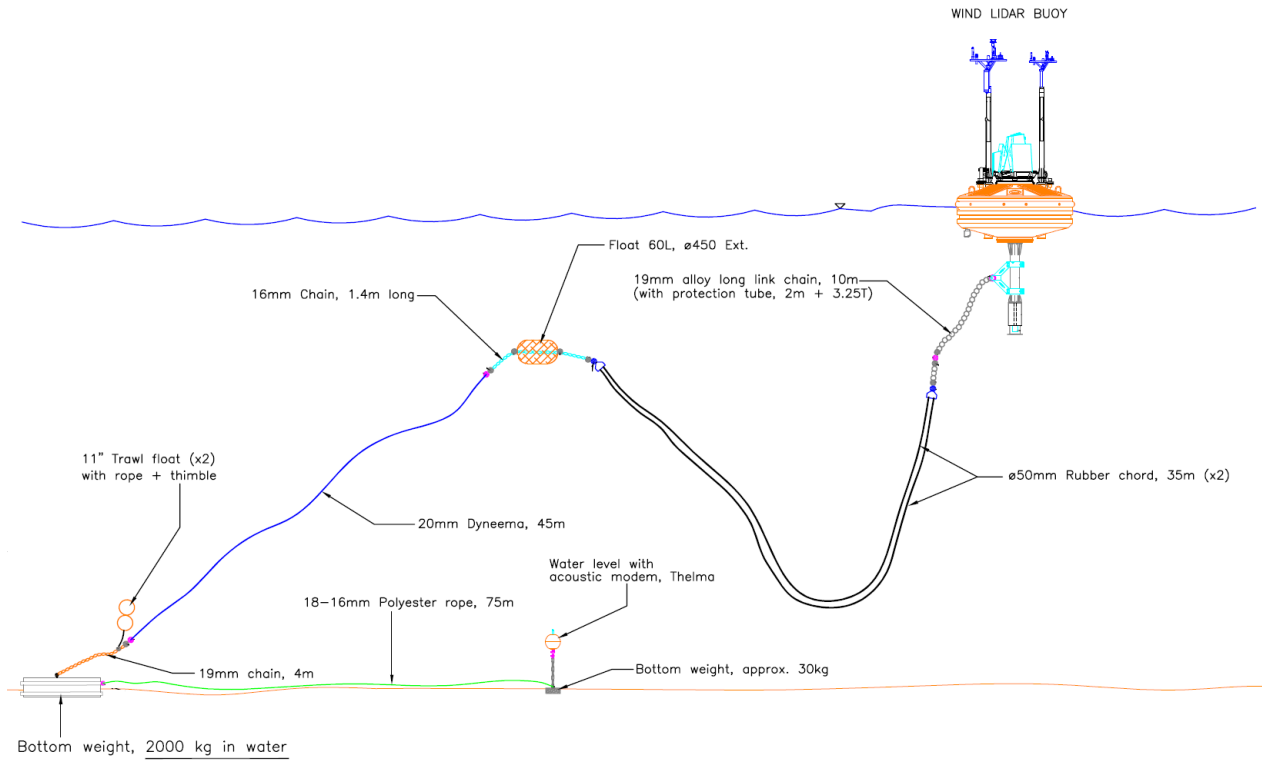
Telephone: +44 781 764 4284

7 Equipment set up

Metocean instrumentation:

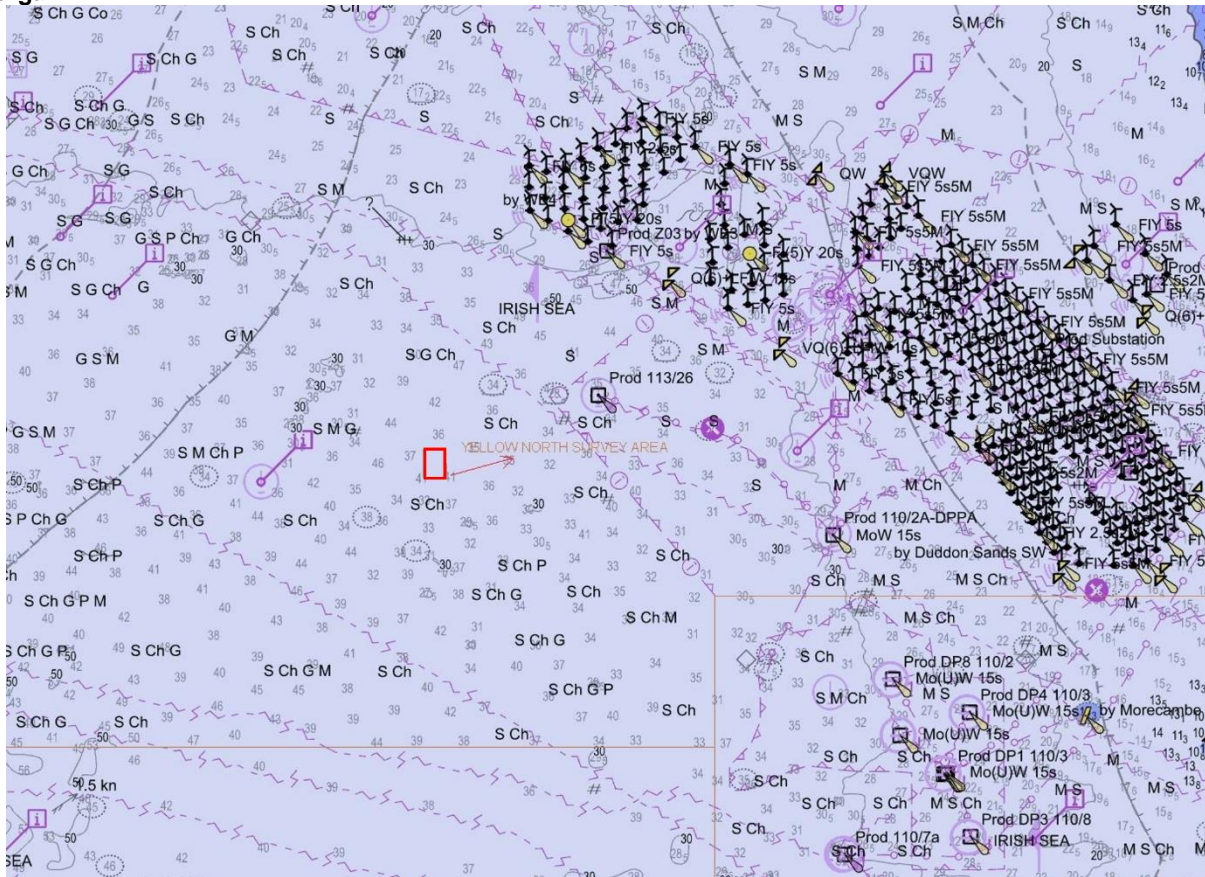


Floating LiDAR instrumentation:



8 Chart of metocean and floating LiDAR instrumentation location

Morgan



Mona

