

Morgan and Mona Offshore Wind Farm

Notice to Mariners

NtM Number	Morgan and Mona Offshore Windfarms/013 (outlining offshore surveys of the array areas and the cable corridors)
Date of Issue	13.04.22
1 Planned Activity	
<p>A geophysical, environmental (benthic) and geotechnical survey of the proposed Morgan and Mona Offshore Wind Farm Project will commence on the 01.04.22 for approximately 2 months. The survey involves the use of Multibeam Echosounder (MBES), Sidescan Sonar (SSS) and Magnetometer equipment, some of which will be towed approximately 150 m astern of the vessel. This will also include lowering equipment to the seabed to acquire environmental and geotechnical samples.</p> <p>The extent of the planned survey is shown in Figure 1. The initial phase of the survey will cover the main offshore array areas, plus a larger buffer area (phase 1 survey). The survey vessel will start in the northern polygon and progress south. The second phase of the survey will cover the potential offshore cable corridors (phase 2 survey) up to the 15m water depth, with the vessel starting within the Mona potential cable corridor.</p> <p>Coordinates of the phase 1 and phase 2 survey areas are also provided below.</p> <p>An Offshore Fisheries Liaison Officer (OFLO) will be present aboard the survey vessel – see details below.</p> <p>Any at sea, operational issues should be directed towards the OFLO in the first instance.</p> <p>More general queries about the survey and/or proposed Project can be directed towards the Fishing Industry Representative (FIR) and the Company Fisheries Liaison Officer (CFLO) – see details below.</p>	
2 Geographic co-ordinates and chart of survey area <i>All positions quoted in WGS84: latitude /longitude (in degrees decimal minutes)</i>	
<p>See attached figure and list of coordinates. In the figure the red and pink lines indicate the actual site boundary, the black hatched area indicates the offshore array plus the buffer area, and the green hatched area indicates the potential cable corridor areas.</p>	
3 Safe clearances, navigation safety features and safety notes for mariners	
<p>All vessels are requested to maintain a safe distance (500m) from the survey vessel <i>Ocean Observer</i> at all times. Vessels will display appropriate shapes and lights when surveying.</p>	
4 Outline programme of works	
Start Date: 2 April	Estimated Completion Date: 31 May


5 Vessel details		
Vessel Name:	Ocean Observer	
Vessel Type / LOA(m):	Multi-Role Survey Vessel / 80.4 m	
Vessel Function:	Survey vessel	
VHF Call Sign:	GHXX	
MMSI:	232217000	
Vessel Operator Telephone:	+44 2039 917 728 +44 7584 686 311	
		
6 Project Contact Details		
Offshore Fisheries Liaison Officer: Chris Emerson (NFFO) Email: nffo-flo@hotmail.com Telephone: +44 750 748 4314	Fishing Industry Representative: Tom Watson (NFFO) Email: tomwatsonfleetwood@btinternet.com Telephone: +44 790 317 3624	Company Fisheries Liaison Officers: Beth Owens (MarineSpace) Email: yellow1-2cflo@marinespace.co.uk Telephone: +44 783 355 7808 Jonny Lewis (MarineSpace) Email: yellow1-2cflo@marinespace.co.uk Telephone: +44 781 764 4284

Figure 1: Morgan and Mona site boundaries (pink/blue lines), the phase 1 survey area (black hatched area) and the phase 2 survey area (green hatched area)

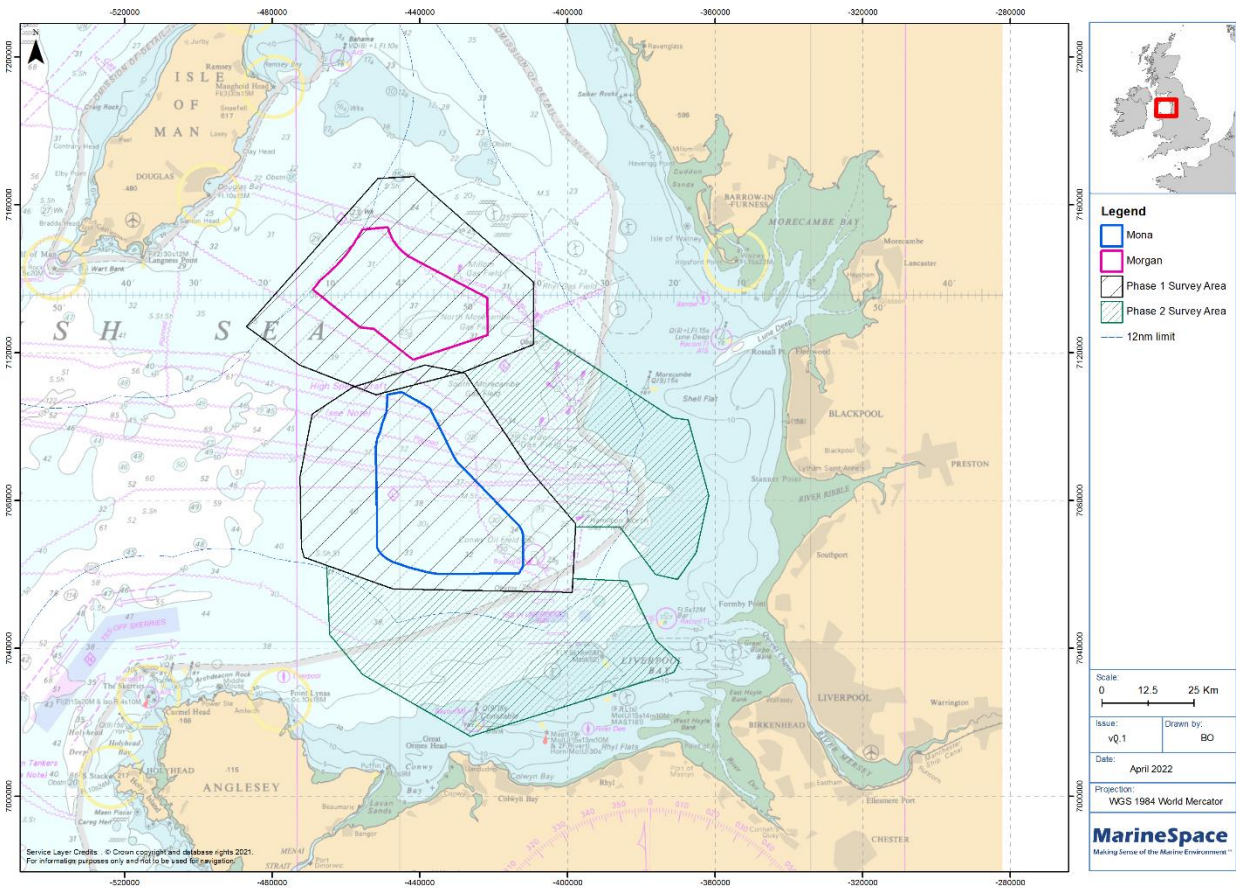


Table 1: Phase 1 survey - Morgan (north) survey area

Point	Latitude (WGS 84)	Longitude (WGS 84)
1	53°53.3595 'N	003°50.8851 'W
2	53°51.4415 'N	004°03.5577 'W
3	53°53.9740 'N	004°14.7361 'W
4	53°57.3020 'N	004°22.5040' W
5	54°10.0028 'N	004°03.3127 'W
6	54°10.1749 'N	003°58.1251 'W
7	54°01.1130 'N	003°40.5657 'W
8	53° 55.7479 'N	003°40.5756 'W
9	53° 53.3595 'N	003°50.8851 'W

Table 2: Phase 1 survey - Mona (south) survey area

Point	Latitude (WGS84)	Longitude (WGS84)
1	53°34.3364 'N	003°34.9349 'W
2	53°34.6353 'N	004°01.0473 'W
3	53°37.3851 'N	004°14.0751 'W
4	53°38.1964 'N	004°14.4857 'W
5	53°44.3424 'N	004°14.6917 'W
6	53°49.7688 'N	004°12.9258 'W
7	53°52.0742 'N	004°06.9567 'W
8	53°53.9909 'N	003°56.4250 'W
9	53°53.2924 'N	003°50.5639 'W
10	53°45.0813 'N	003°41.3673 'W
11	53°40.2885 'N	003°34.4442 'W
12	53°34.3364 'N	003°34.9349 'W

Table 3: Phase 2 survey - Morgan (north) survey area

Point	Latitude (WGS 84)	Longitude (WGS 84)
1	53°40.01228 'N	003°34.38883 'W
2	53°40.27606 'N	003°34.36703 'W
3	53°45.06945 'N	003°41.29084 'W
4	53°53.28170 'N	003°50.48827 'W
5	53°53.33283 'N	003°50.91574 'W
6	53°53.34880 'N	003°50.80947 'W
7	53°55.73738 'N	003°40.49869 'W
8	53°57.19801 'N	003°40.49591 'W
9	53°49.41373 'N	003°20.10161 'W
10	53°49.23254 'N	003°17.90521 'W
11	53°42.69641 'N	003°14.89696 'W
12	53°37.79478 'N	003°16.73344 'W
13	53°35.42950 'N	003°19.43577 'W

Point	Latitude (WGS 84)	Longitude (WGS 84)
14	53°35.86713 'N	003°22.69833 'W
15	53°36.34314 'N	003°23.31232 'W
16	53°40.00228 'N	003°27.87215 'W
17	53°40.00503 'N	003°33.27344 'W
18	53°40.01228 'N	003°34.38883 'W

Table 4: Phase 2 survey - Mona (south) survey area

Point	Latitude (WGS 84)	Longitude (WGS 84)
1	53°35.50406 'N	003°34.76077 'W
2	53°35.31966 'N	003°26.77419 'W
3	53°30.13612 'N	003°22.60582 'W
4	53°28.29930 'N	003°19.24327 'W
5	53°27.35785 'N	003°20.04043 'W
6	53°21.79181 'N	003°49.81971 'W
7	53°27.17419 'N	003°5.46837 'W
8	53°30.66039 'N	003°10.26520 'W
9	53°36.67869 'N	003°10.70125 'W
10	53°34.62253 'N	003°0.97357 'W
11	53°34.32328 'N	003°34.85799 'W
12	53°35.50406 'N	003°34.76077 'W