

# Morven Offshore Wind Farm

## Notice to Mariners

NtM Number	Morven Windfarms/003 v01 Geotechnical Survey <b>(outlining offshore surveys of the array area)</b>
Date of Issue	22.09.22
<b>1 Planned Activity</b>	
<p>The vessel Normand Mermaid will be undertaking Deep CPT operations at 150 locations throughout the Morven windfarm area starting on the <b>05<sup>th</sup>October 2022</b>. The work is estimated to take up to 8 weeks and end on the week beginning <b>28<sup>th</sup>November 2022</b>.</p> <p>The vessel will deploy a seabed frame through its moonpool at each location to collect the CPT data. The vessel will be stationary for up to 6 hours at each individual location.</p> <p>Marine users are requested to maintain the safe clearance distances as outlined in Section 3 below throughout the deployment period.</p>	
<b>2 Geographic co-ordinates and chart of survey area</b> <i>All positions quoted in WGS84: latitude /longitude (in degrees decimal minutes)</i>	
See attached figure and list of coordinates. In the figure the burgundy line indicates the survey area.	
<b>3 Safe clearances, navigation safety features and safety notes for mariners</b>	
All vessels are requested to maintain a safe distance (500 m) from the survey vessel Normand Mermaid at all times. Vessels will display appropriate shapes and lights when surveying.	
<b>4 Outline programme of works</b>	
Start Date: <b>05/10/2022</b>	Estimated Completion Date: <b>28/11/2022</b>


5 Vessel details	
Vessel Name:	<b>Normand Mermaid</b>
Vessel Type / LOA(m):	Multi-Role Survey Vessel / 90.1m
Vessel Function:	Survey vessel
VHF Call Sign:	LAXH7
MMSI:	258612000
Vessel Operator Telephone:	+47 52 85 60 06
	
6 Project Contact Details	
<p><b>Company Fisheries Liaison Officers:</b></p> <p>Richard Joseph (Marine Space)            Email: <a href="mailto:richard.joseph@marinespace.co.uk">richard.joseph@marinespace.co.uk</a>            Telephone: 07944 981839</p> <p>James Duffy (Marine Space)            Email: <a href="mailto:james.duffy@marinespace.co.uk">james.duffy@marinespace.co.uk</a>            Telephone: 07584 068838</p>	<p><b>Company Fisheries Liaison Project contact:</b></p> <p><a href="mailto:Morven-CFLO@marinespace.co.uk">Morven-CFLO@marinespace.co.uk</a></p>

Figure 1: Morven survey areas (purple line)

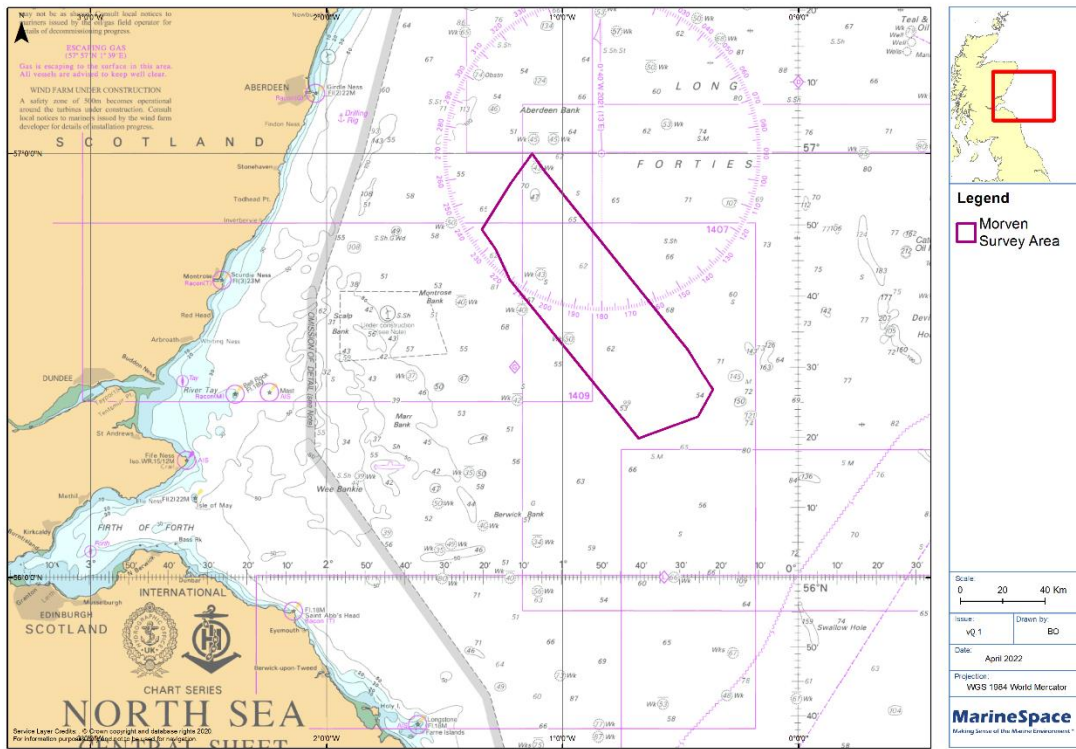


Table 1: Morven survey area

Point	Latitude (WGS 84)	Longitude (WGS 84)
1	56°19.8542 'N	000°40.7271 'W
2	56°21.9250 'N	000°43.6284 'W
3	56°22.4237 'N	000°44.3521 'W
4	56°42.2936 'N	001°13.3747 'W
5	56°46.6587 'N	001°17.0965 'W
6	56°49.3810 'N	001°20.5609 'W
7	56°55.8604 'N	001°13.2649 'W
8	56°59.9929 'N	001°7.8065 'W
9	56°57.6000 'N	001°4.6217 'W
10	56°32.4315 'N	000°28.2133 'W
11	56°29.1201 'N	000°24.5352 'W
12	56°26.8175 'N	000°21.8204 'W
13	56°22.9322 'N	000°25.5861 'W
14	56°19.8542 'N	000°40.7271 'W