

Morgan and Mona Offshore Wind Farms

Notice to Mariners

NtM Number	Morgan and Mona Offshore Windfarms /012 (updated notification with as-laid positions)
Date of Issue	24.03.22

1 Planned Activity



Metocean instrumentation and floating LiDAR instrumentation are to be deployed within the boundary of the proposed Morgan (North) and Mona (South) Offshore Wind Farm Project sites in the Irish Sea.

The metocean instrumentation within the Mona and Morgan Project site were deployed successfully in November 2021. It should be noted that instrumentation is deployed on the seabed some distance from the surface buoy, so marine users are requested to maintain the safe clearance distances as outlined in Section 3 below. Further details on the mooring design are available in Section 7. Metocean instrumentation at the Mona (South) location has been temporarily recovered from site due to damage to the mooring. Plans are currently being made for its redeployment.

The floating LiDAR instrumentation were successfully deployed at the Mona Project site and the Morgan project site in March 2022. It should be noted that instrumentation is deployed on the seabed some distance from the surface buoy, so marine users are requested to maintain the safe clearance distances as outlined in Section 3 below. Further details on the mooring design are available in Section 7.

The equipment will be maintained in position via appropriate mooring systems and will gather metocean data to inform the proposed Project. Details of the devices and relevant Aids to navigation are provided below.

The metocean instrumentation and floating LiDAR equipment will undergo regular scheduled maintenance during the operation period, where vessels may be onsite for 1 day at a time; further notice to mariners will be issued confirming the dates and maintenance activities. During the Floating Lidar servicing it will be towed to port for servicing prior to redeployment. Details of the anticipated scheduled maintenance dates are provided in Section 4 below, please note that these are currently the expected timings.

Floating LiDAR instrumentation		Metocean instrumentation	
Morgan Name: Fugro Buoy WS188 MMSI: 992351368	Mona Name: Fugro Buoy WS187 MMSI: 992351369	Morgan Name: Morgan 01 MMSI: 992351367	Mona Name: Mona 01 MMSI: 992351366
Yellow 'X' shaped topmark Yellow in colour Fl (5) Y 20s light (3.5nm range) Flash rate not exceeding 20 per minute			Yellow 'X' shaped topmark Yellow in colour Fl (5) Y 20s light (3.5nm range) Flash rate not exceeding 20 per minute

2 Geographic co-ordinates and chart of survey area

All positions quoted in WGS84: latitude /longitude (in degrees decimal minutes)

Area	Floating LiDAR anchor	Metocean instrumentation	Metocean marker buoy anchor
Morgan (North)	53° 59.5211' N 3° 59.4018' W	53° 59.709' N 3° 59.730' W	53° 59.746' N 3° 59.661' W
Mona (South)	53° 40.0799' N 3° 53.444' W	n/a	n/a

3 Safe clearances, navigation safety features and safety notes for mariners

All vessels are requested to maintain a safe distance (500m) from the installation vessels (Forth Joustier, Vital or Vector) at all times. All vessels are requested to maintain a safe distance (400m) from the deployed monitoring equipment at all times.

4 Outline programme of works

Deployment (both Mona and Morgan Project sites)

Floating LiDAR instrumentation	Metocean instrumentation
Estimated Deployment Date: <i>Complete</i>	Estimated Deployment Date Morgan: <i>Complete</i> Estimated Deployment Date Mona: <i>Complete</i>

Operation (both Mona and Morgan Project sites)

Floating LiDAR instrumentation	Metocean instrumentation
Start: March 2022 End: Q1 2024	Start: November 2021 End: October/ November 2022

Maintenance schedule (both Mona and Morgan Project sites)

Floating LiDAR instrumentation	Metocean instrumentation
October 2022 July 2023	May 2022 August 2022 November 2022

5 Vessel details

Vessel Name:	Forth Joustier
Vessel Type / LOA(m):	Multi-role survey vessel / 26.00 m
VHF Call Sign:	2BME4
MMSI:	235067372
Vessel Operator Telephone:	01592 872939



Vessel Name:	Vital
Vessel Type / LOA(m):	Multi-Role Survey Vessel / 17.0 m
VHF Call Sign:	2 GSI 9
MMSI:	235100118
Vessel Operator Telephone:	+44 (0) 7845 847 176



Vessel Name:	Vector
Vessel Type / LOA(m):	Multi-Role Survey Vessel / 21.6 m
VHF Call Sign:	2BBA2
MMSI:	235064573
Vessel Operator Telephone:	+ 44 (0) 7883 735 888

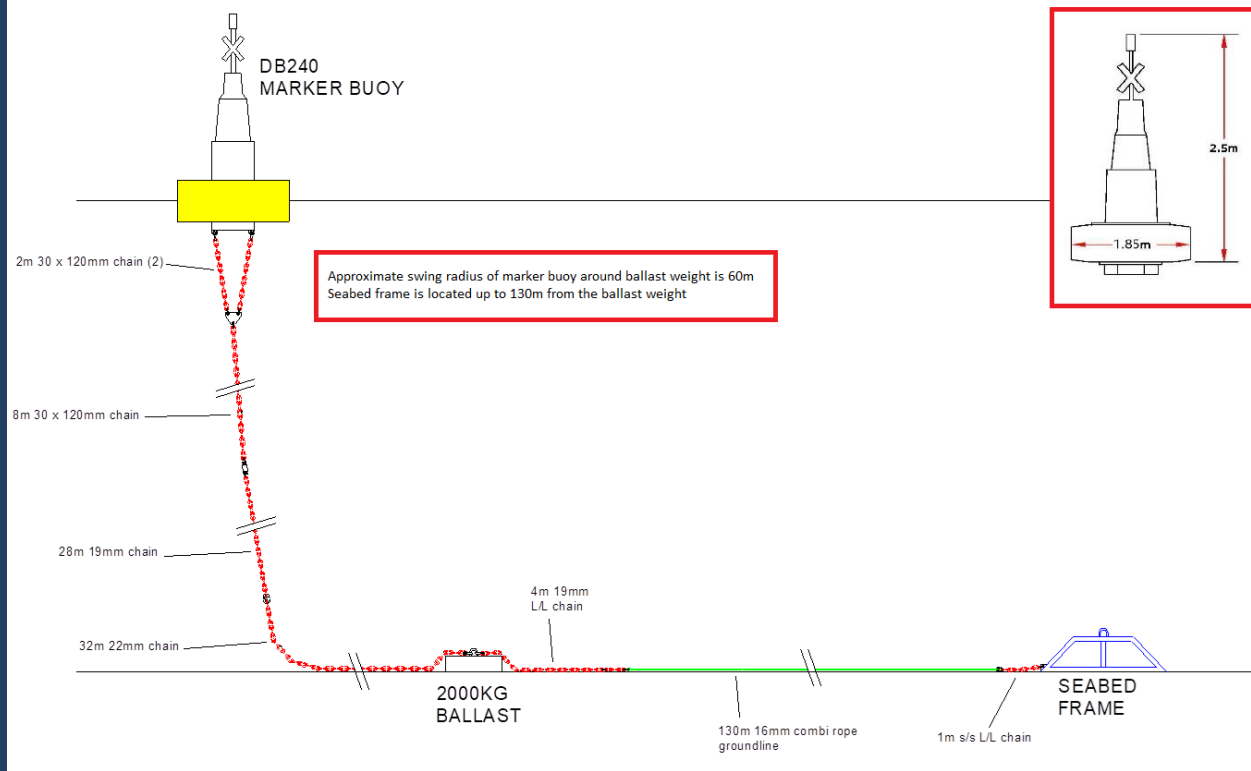


6 Project Contact Details

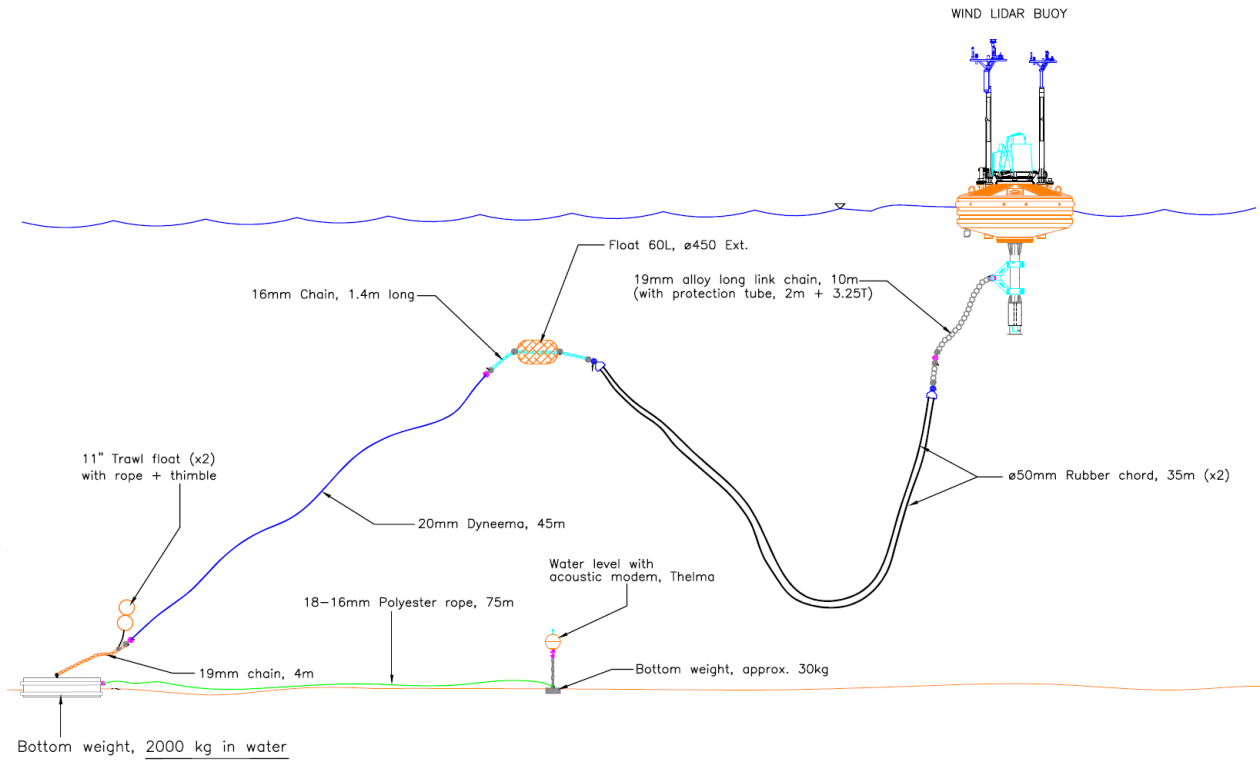
Fishing Industry Representative: Tom Watson (NFFO) Email: tomwatsonfleetwood@btinternet.com Telephone: +44 790 317 3624	Company Fisheries Liaison Officers: Beth Owens (MarineSpace) Email: Yellow1-2CFLO@marinespace.co.uk Telephone: +44 783 355 7808 Jonny Lewis (MarineSpace) Email: Yellow1-2CFLO@marinespace.co.uk Telephone: +44 781 764 4284
--	---

7 Equipment set up

Metocean instrumentation:

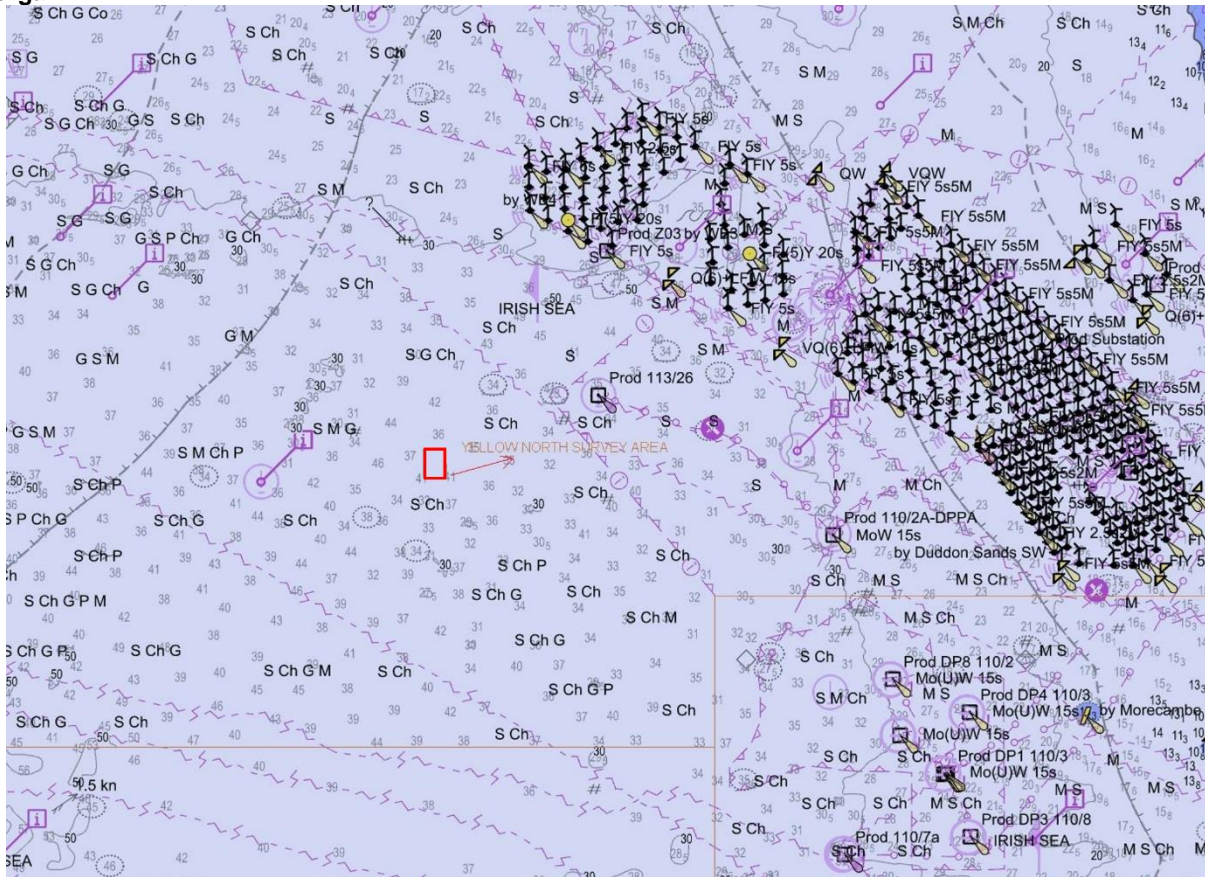


Floating LiDAR instrumentation:



8 Chart of metocean and floating LiDAR instrumentation location

Morgan



Mona

